

SWINDON TOWN



OFFICIAL CLUB SPONSOR

GWR FM
97.2



BARCLAYS

DIVISION TWO

MIDDLESBROUGH

SATURDAY SEPTEMBER 15th 1990

KICK-OFF 3.00 p.m.

OFFICIAL PROGRAMME £1.00

**TODAY'S
MATCH SPONSOR:**

Crosby Doors Ltd.



97.2

FIRST FOR SPORT IN WILTSHIRE

We offer the most comprehensive sports coverage in the county.

Tune to 97.2 or 102.2 MHz for updates at:

06.45 07.45 08.45 13.10 17.15

Plus our weekend coverage starting on Friday at 17.15 with the exclusive Swindon Town coverage featuring Ossie Ardiles, players and management from the County Ground.

Saturday sport is a full four hours starting at 14.00 with detailed match coverage and radio's first classified football results at 16.55.

Hull: a point won — not points lost

Once again, welcome to the County Ground, where we today welcome the players, officials and supporters who have made the long trip from Middlesbrough.

In my last programme notes, I said that it was too early to talk about promotion and that there was a long, long way to go before the end of the season.

Unfortunately, I was immediately proved right by our defeat by Bristol City. We were as disappointed by our display as I am sure you were with the result, but I hope we will have learned from the experience. Unfortunately, we again produced a below-par performance against our neighbours and now have to suffer our dented pride — at least until we meet City again.

We still created many more chances than City in that match and might well have got something from the match.

Last Saturday's game at Hull was another disappointment in terms of the final result. But, having said that, points have to be hard-won away from home and I like to see it as another point won rather than two lost.

We produced some flowing football at times and Alan McLoughlin not only successfully came through his first full game after injury, but produced an excellent goal too.

This week we agreed the transfer of Dave Hockaday to Hull City for £60,000. It is always sad to see a player go. In Dave's case, he was the longest serving player in the squad and has always been a good player to have around — always an excellent professional.

But Dave asked for a transfer at the beginning of the season because his appearan-

ces have been restricted since the signing of David Kerslake and he wanted regular first-team football. I know I speak for everyone in wishing him the best of luck with his new club.

The transfer of Dave leaves us even more stretched with the number of players in the squad. We have naturally been looking for new players and have been taking an interest in one in particular.

I cannot name the player, for obvious reasons, but I hope that we will be able to strengthen the squad shortly.

Don't forget to get behind the team again today and enjoy the game.

We were all deeply shocked and saddened to hear of the sudden tragic death of David Longhurst. We extend our deepest sympathy to David's family and the officers and players of York City F.C.

The players of both teams will wear black armbands in today's game.

David's funeral took place yesterday at St. Brandans Church, Corby.



WELCOME TO THE
COUNTY GROUND
—HOME OF



SWINDON TOWN
FOOTBALL CLUB

County Ground, Swindon, Wiltshire
SN1 2ED

Telephone:

(0793) 430430 (Main Office and
Commercial Department)

(0793) 611499 (Travel Club)

(0793) 535130 (Rendezvous Club)

Fax: (0793) 536170

President: C. J. Green

Chairman: G. W. Herbert

Vice Chairman: C. M. Howard

Directors: L. Smart, N. H. Arkell,

K. J. Chapman

Chief Executive: P. Day

Manager: O. C. Ardiles

Non Executive Directors:

D. Alderton, R. M. Mattick JP,

M. Z. Tryczynski

Commercial Manager: D. Buswell

Assistant Manager: P. D. Bates

Coach: A. A. Rowland

Youth Team Manager: J. Trollope

Physiotherapist: K. Morris

Hon. Medical Officer:

Dr. J. D. Nicholas

Chaplain: Rev. N. Sands

Official Club Sponsor: GWR FM

Today's Match Sponsors are:

CROSBY DOORS LIMITED

The Directors of Swindon Town Football Club would like to express their gratitude to **Crosby Doors Limited** for their generosity in sponsoring today's match.

This is the official programme of Swindon Town Football Club. Individuals contributions do not necessarily represent the views of the club.

Edited by **Graham Carter** with the valued assistance of **Paul Plowman**.

Printed by **Thamesdown Litho**

Front cover: David Kerslake in action.

Welcome to the players, officials
and supporters of

MIDDLESBROUGH



MIDDLESBROUGH – FIRST TEAM SQUAD SEASON 1990/91

Back row left to right: Jimmy Phillips, Trevor Putney, Stephen Pears, Kevin Poole, John Wark, Martin Russell.

Middle row left to right: David Nish (Assistant Manager), Nicky Mohan, Simon Coleman, Ian Baird, Gary Parkinson, Tony Mowbray, Colin Cooper, Owen McGee, Colin Todd (Manager).

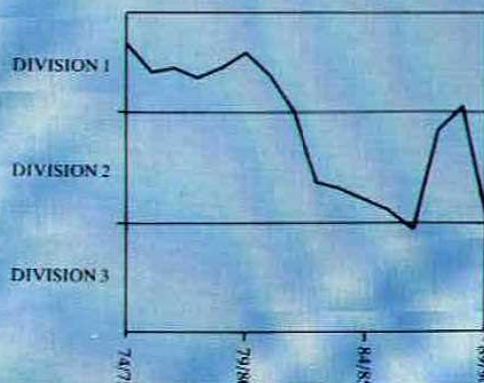
Front row left to right: Alan Kernaghan, Paul Kerr, John Hendrie, Robbie Mustoe, Stuart Ripley, Bernie Slaven, Mark Proctor, Gary Hamilton, Mark Burke.

MIDDLESBROUGH – Form Guide

Matches so far this season . . .

		H	A	Goalscorers	Att.
Aug	25	West Ham United	D0-0	-	20,680
	28	Tranmere Rovers	D1-1	Mowbray	10,667
Sep	1	Plymouth Argyle	D1-1	Slaven	6,226
	3	Tranmere Rovers	W2-1	Mustoe, Slaven	6,135
	8	Notts County	W1-0	Wark	17,380

MIDDLESBROUGH – THE LAST 15 YEARS



GWR FM 97.2

AND SWINDON TOWN

The Squad

Bernie Slaven. Born in Paisley, Scotland. Previously with Albion Rovers. Bernie signed for Boro after trials in 1985 and has been the top scorer for the last two seasons (32 last season).

Was a member of the Republic of Ireland squad in the World Cup.

Stephen Pears. Goalkeeper, born in County Durham, but signed first for Manchester United. Joined Boro on loan, then signed permanently in June 1985. Made 34 first team appearances last season after an early injury.

Gary Parkinson. Middlesbrough-born defender who was an associate schoolboy with Everton and signed for Boro in May 1986. Now with over 200 first team appearances.

Nicky Mohan. Tall defender who was born in Middlesbrough and joined the club under a YTS scheme, but soon signed a professional contract. Made his debut in January 1989.

Colin Cooper. Another local lad, who signed for Boro as a 16-year-old in 1983. Now with nearly 200 first team appearances with several England Under-21 caps.

Tony Mowbray. Yet another local lad who plays in defence. A fixture in the team since making his debut against Newcastle in 1982. Now with over 250 appearances and the skipper for the past four seasons.

Simon Coleman. Tall central defender who cost Boro £400,000 as a replacement for Gary Pallister last September. Formerly with Mansfield Town, Simon scored five goals in five games as a makeshift forward in November 1988.

Alan Kernaghan. An Irish lad who signed for Boro as an apprentice in 1983 and turned professional two years later. Made his debut in February 1985 and now has over 120 appearances under his belt.

Jimmy Phillips. Former Bolton, Glasgow Rangers and Oxford defender. He was an ever-present with Oxford in 1988/89. Boro beat the transfer deadline in March 1990 when he signed for £250,000.

Paul Kerr. Midfielder, born in Portsmouth and formerly with Aston Villa. Took time to settle at Boro, but showed promise last season, despite missing much of it with an ankle injury.

Mark Procter. Middlesbrough-born midfielder who joined Sunderland as an apprentice. Had spells with Boro, Nottingham Forest and Sheffield Wednesday before returning to Ayresome Park in 1988 for £300,000. Has England Under-21 honours.

Robbie Mustoe. £375,000 signing in July 1990 from Oxford, his home-town club.

A first-team regular at the Manor Ground for the last two seasons. Has been included in the England Under-21 squad.

Martin Russell. A recent £100,000 signing from Scarborough. Has four Republic of Ireland Under-21 caps and was called up for B internationals last season, but didn't make his debut for Boro last season.

Ian Baird. Rotherham-born forward, formerly with Southampton, Leeds, Portsmouth and Leeds (again). Signed for Boro in January for £500,000 and played the last 19 games of last season.

John Hendrie. A Scot who joined Boro in July from Leeds for £500,000. Previously with Newcastle and Bradford City, for whom the 5ft 7in winger scored 46 goals in 173 appearances.

John Wark. 33 year-old former Ipswich and Liverpool midfielder who won 29 Scotland caps. Made 450 appearances for Ipswich, for whom he scored 145 goals. Bought from Ipswich in July 1990.

Stuart Ripley. Another local youngster with Under-21 honours who graduated through the apprentice ranks and has now consolidated a regular first team place.

Owen McGee. A tough-tackling youngster from Middlesbrough who made 17 first team appearances towards the end of last season and won some "rave reviews".

PAUL PLOWMAN continues his season by season look back at Swindon Town through the years.

1960/61

A week before the season properly started, there was always a public trial between the 'Reds' and the 'Blues' or the probables and possibles from which the Manager selected the League side. August 13 1960 was no exception, but the result on this occasion certainly was: Reds 2 Blues 7! Bert Head could hardly believe his eyes and promptly arranged a 'replay', after which he promoted both 17 years-old reserve full-backs to the Third Division eleven. They were Norman Trollope – better known as John – and Terry Wollen. The pair adjusted to League football quickly as Swindon were undefeated in the first six fixtures.

Trollope missed two games with 'flu at Easter 1961, but was never absent from the senior side again for a remarkable period of seven years. Another youngster, 19 year-old Bobby Woodruff, was switched from wing-half to centre-forward during October and immediately

responded with a hat-trick in a 6-0 defeat of Port Vale. He finished the season with 13 League goals, just one behind top scorer 'Ernie' Hunt.

A tempting £6,000 offer from Bradford City for 'Bronco' Layne was accepted in December and winger Freddie Jones was signed for half that sum.

Swindon finished the season a disappointing 16th in the table, largely due to an away record of only one win. Going into April, they were actually in 21st place, but were unbeaten in the last eight games.

There was little joy for the Town in either of the Cup competitions. They were removed at the Second Round stage on both occasions by Shrewsbury Town. Swindon actually faced the Shropshire side eight times in four months, as the clubs also met in Division Three and the Football Combination during that time. The only Cup success came in a ten goal thriller at Bath in a First Round F.A. Cup replay. Layne scored four goals in a 6-4 win.

Centre-half Peter

League debuts at 17...



John Trollope



Terry Wollen



Chamberlain, restricted to just nine League appearances by the return of Maurice Owen after injury, made a name for himself as the season came to an end. Playing for the reserves on May 1, he gave away a first-minute penalty and then went on to score all five Town goals in a 5-3 win over Crystal Palace! It won him a place on Swindon's tour of Holland later that month.

New floodlight pylons appeared at the County Ground in September 1960 and were switched on for the first time against Watford. Each pylon contained 24 1500-watt lamps and was 120 feet high. The Supporters' Club met the £15,000 costs.

ARKELL'S

ESTD **BREWERY** 1843



Sports Commentators

Let's consider the commentators – I may be laying myself open to criticism, but here goes!!

Their role is to enhance the coverage and make sense of the pictures so far as television is concerned. Perhaps the most widely-acclaimed "voice" of the moment is Brian Moore who started on the radio in 1966.

I grew up with him on Sunday afternoons presenting the Big Match which, unfortunately for HTV viewers, was always dominated by the London clubs. For years he was anchorman for the independent network's coverage of the World Cup from England but this summer was let loose for Italia '90. His predecessors, I think, at the big matches were Hugh Johns, famous for his use of one-nothing, 2-nothing, etc. rather than one-nil, 2-nil etc. and David Kerslake's favourite commentator Martin Tyler, who's recently joined BSB. He's a real football buff, who's also collaborated on many soccer books. Another one who "knows his subject" is John Motson. I very nearly went on the same journalists training course as the BBC's "voice of football", but that's another story. His attention to detail is his trademark, but do we really want to know all the information that he drags up?

Is such an "in-depth" approach really necessary?

"Beeb" colleagues include Barry Davies, Gerald Sinstadt and Tony Gubba who, it seems, is always despatched to the far-flung game on F.A. Cup day in search of an upset.

On the other side there's Alan Parry, John Helm and Gerry Harrison. They've lost Peter Brackley to satellite TV where other voices include Ian Darke and Paul Dempsey – also very familiar names because of their lack of exposure.

Absent from the roll-call so far is the doyen Kenneth Wolstenhelme, who inspired the England New Order/World In Motion record. He was a visitor to the County Ground not too long ago and a true gentleman who would like to point out that he had many other assignments apart from England/West Germany 24 years ago.

Then there's David Coleman, who's now attached to the athletics world. He inspired the Private Eye Collection of Colemanballs – great moments in broadcasting history – gaffes guaranteed to put a smile on the face are:

"Ayr 1, Abroath 0 – Arbroath still without an away win of any kind."

"The familiar sight of Liverpool getting the League Cup for the first time."

SHAUN HODGETTS OF GWR FM WITH HIS "IN-DEPTH" LOOK AT THE FOOTBALL SCENE.



"With the very last kick of the game, Bobby MacDonald scored with a header."

We haven't mentioned the local men on the gantry including HTV's Robert Malone or radio commentary – a whole new ball game.

Listen in for more details.

GWR FM 97.2

**NUMBER ONE
IN WILTSHIRE**

LEMON & CO

SOLICITORS

*A SUBSTANTIAL PRACTICE ABLE TO
PROVIDE ADVICE & HELP IN ALL
ASPECTS OF COMMERCIAL & PRIVATE LIFE
AND INCLUDING A FRIENDLY, THOROUGH
AND PROFESSIONAL CONVEYANCING
SERVICE*

Richard Fry, Timothy Dixon, Deirdre Moss

34 Regent Circus

Swindon SN1 1PY

Tel: SWINDON 527141

FAX: SWINDON 614168

Martin Evans, Stephen Moss

148 High Street

Wotton Bassett SN4 7AB

Tel: SWINDON 853665

Fax: SWINDON 850324

Richard Challis, David Halfhead

1 Little London Court

Old Town, Swindon SN1 3HY

Tel: SWINDON 527141

Fax: SWINDON 511639

SWINDON T O W N

CLUBCALL

0898 12 16 40

AVAILABLE FROM ANYWHERE IN THE U.K.
7 DAYS A WEEK 52 WEEKS A YEAR

SWINDON ***CLUBCALL***

Calls cost 33p/minute cheap; 44p/minute other times.

BT Supercall, 1-9 Downham Road, London N1 5AA.

 SUPERCALL

In sympathy

It was with great regret that Swindon Town Football Club learned of the death of avid fan Jeremy Thompson, from Up Hatherley, near Cheltenham. Jeremy, aged 18, died peacefully in his sleep on September 3. The club extends its sympathy to Jeremy's family, which includes many Town fans.

Ticket news

The matches with Wolves (next Tuesday) and Millwall (Sunday, September 29) are NOT all-ticket. The Millwall match is all-ticket for away fans only.

Baldrick is locked out

Tony Robinson - Black Adder's side-kick, Baldrick - was a visitor for the match against Bristol City. Tony lives in Bristol and is a City fan. He was spotted outside the Town End after the match had started, waiting for his friend to arrive with his ticket.

Don't delay - join today

The Travel Club has reported a "phenomenal" increase in new members and a record six coaches to the first away match of the season.

The Travel Club aims to get supporters to matches as comfortably and safely as possible at the best possible prices - trips to Oldham, for instance, cost just £8.50 and hot and cold refreshments are served on all journeys.

They use Barnes Executive Coaches (the same as the team).

The Travel Club is open on Tuesday, Wednesday and Thursday evenings (7.30 - 10 pm) and on afternoon matchdays (1 - 2.45 pm). The club's phone number is 611499. You can also contact Vice-Chairman Janet Smith on (0453) 883051 outside these hours.

New members are always welcome. Membership is just £5 for three years. Bookings are now being taken for the matches at Oxford, Oldham and Brighton.

"Don't delay - join today".

Good luck Lisa

Secretary Lisa Maberly has left the club. We wish Lisa, a familiar face at the County Ground in recent years, the best of luck in the future.

Welcome Colin - and thanks

Amongst the Middlesbrough fans tonight is Colin Haverson, who is Chairman of the Middlesbrough Supporters Club and an official of the National Supporters Association. When we were demoted to the Third Division during the summer, Colin co-ordinated our campaign in the North East and made a donation to the fighting fund from his own pocket. So it's a special welcome to Colin tonight and thanks!

Was it a dream?

If you wondered whether our play-off victory over Sunderland was a dream, then why not buy the souvenir colour video of the match, called A Day To Remember. It's available now for £20 if collected (£1.25 extra for postage and packing) and also includes scenes from the players' open top bus ride through the town.

Full colour videos of all home matches are also available and cost £11.50 if collected (£1.25 extra for postage and packing).

The videos can be obtained from the Commercial Office, at the back of the Town End.

Shrivenham Road fans

Fans who stand on the Shrivenham Road terrace are reminded that for safety and security reasons they will no longer be allowed to leave the ground by walking in front of the Town End at the end of matches. Thank you for your co-operation.



Paul Bodin has enjoyed an excellent start to the season, scoring the opening goal of the season at Charlton and being named in the Welsh squad to face Hungary earlier this week. Here he tries one of his famous free-kicks in the match against Ipswich. His performance earned him the Biplob Tandoor Man of the Match award and he can now enjoy a meal for two at the Biplob restaurants in High Street, Highworth or Wood Street, Swindon.

GWR FM 97.2

CALL THE RADIO LINE FOR THE LATEST SPORTS NEWS 24 HOURS A DAY

ON 0898 333000 Calls charged at 38p/min peak/25p/min all other times

BETTER BUY BURMAH

Burmah Petroleum Fuels Limited
is proud to support Swindon
Town Football Club and offers a
warm welcome to all supporters
at:

Swindon Autopoint
Marlborough Road, Swindon

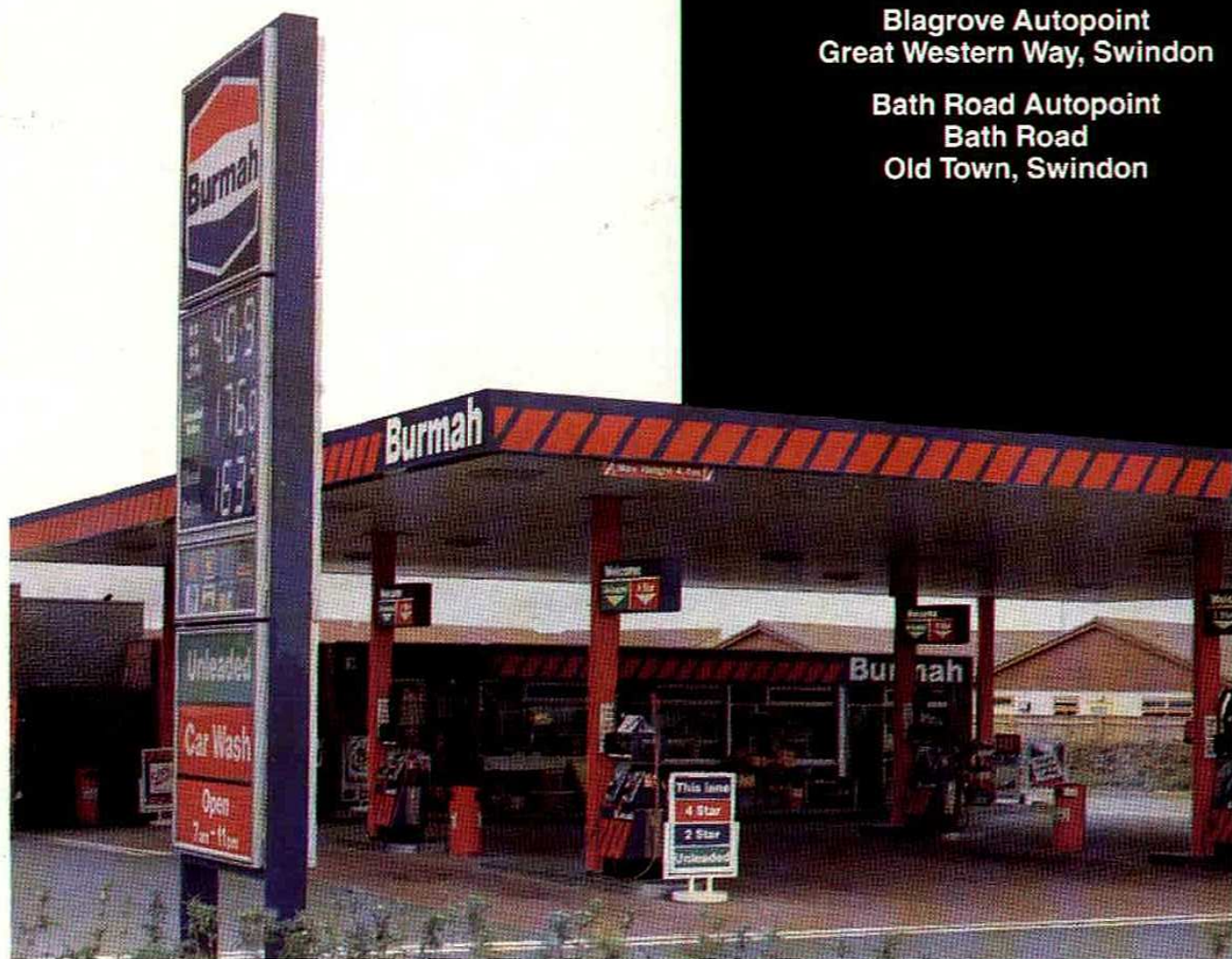
Newport Street Autopoint
Newport Street
Old Town, Swindon

Stratton Autopoint
67 Bridgend Road
Stratton St Margaret, Swindon

St. Margarets Garage
Highworth Road
Stratton St. Margaret, Swindon

Blagrove Autopoint
Great Western Way, Swindon

Bath Road Autopoint
Bath Road
Old Town, Swindon



Look out for the Burmah
Footballs kicked into the
crowd at every home match!



Help us plan the new stand

Lesson one – when attending an away game always, always wear a jacket and tie. It seems that sartorial elegance is a must in boardrooms throughout the land, as I discovered when being turfed out of Hull City's hallowed halls. It looks like Dunn & Co. are about to acquire a new client . . .

I recently attended my first Board Meeting and was struck by two things. First, the Board are looking forward rather than back and it is obvious that Ken Chapman, the new director, adds greatly to the team. Second (and of particular importance to those who suspect that the "supporter/director" experiment is first a public relations exercise) a range of highly confidential matters were discussed during the two and a half hours that I was present, indicating that the Board consider this role to be a real one.

Probably the key issue facing the club is the redevelopment of the Shrivenham Road Stand. At the end of the season the existing structure will be completely demolished and work will start on the construction of a new stand. In fact, the only thing that's missing is a plan and that is where the club would like to hear your views and ideas. What facilities should be included? How could usage and revenue be maximised? How should it be funded? Some of you may have visited purpose-built stadia abroad – what new ideas did you pick up that could be incorporated

here? If you have views then please share them with us but make it soon – detailed planning has to start shortly.

Getting back to the "supporter/director" role, clearly the most important aspect is to keep in touch with the fans and here I can report only partial success. The Swindon Town Supporters Group – consisting of representatives of the various organised supporters bodies and the supporters director – meets every three to four weeks and has gelled into an effective forum. But that still leaves a significant majority of fans who don't belong to an organised body and, so far, the mailbag is not exactly bulging. So if you fall into that category and you would like your views represented at board level, please write to me c/o the County Ground.

That said, the letters I have received highlight two key issues. First, the Town End and its use exclusively for away supporters. Quite apart from giving them a "noise" advantage over the acoustically inferior Stratton Bank and Shrivenham Road terraces, the Town End will clearly be a wasted resource when the likes of Port Vale and Hull bring only a handful of supporters to the County Ground. Well, this is a view with which the club has considerable sympathy and discussions are currently taking place with the police and the Safety Committee to see whether anything can be done.

**FAN-FARE IS WRITTEN BY
FOOTBALL'S FIRST
SUPPORTER/DIRECTOR,
MARTIN TRYCZYNSKI
(MARTIN T)**



The second issue relates to tickets and how out of town supporters can obtain them without having to make lengthy round trips in midweek. Again, this is a problem which is receiving urgent consideration – hopefully a solution will shortly be found.

The last word goes to Mr. E. Townsend who wrote to me with a list of views and ideas and saved the most important question to the last. I quote: "WHY THE BLOODY HELL CAN'T WE BEAT BRISTOL CITY?"

I'll drink to that!

McLEAN HOMES. BUILDING FOR EVERYONE'S FUTURE

McLean's superbly built homes are ideal for
the 1990s.

Whether it's a 1-bed starter apartment, or a
magnificent 4-bed executive home, the quality
is outstanding.

And we'll keep building for everyone's future,
right into the 21st century.

McLean
CREATIVE BUILDERS

McLean Homes South West Limited, Omicron, Windmill Hill Business Centre,
Swindon, Wilts. SN5 9YU. Tel: (0793) 874700.



WALKER JACKSON

IVECO
TRUCK



Get a fresh start to motoring this season



ALL PRICES
ARE
INCLUSIVE
OF VAT

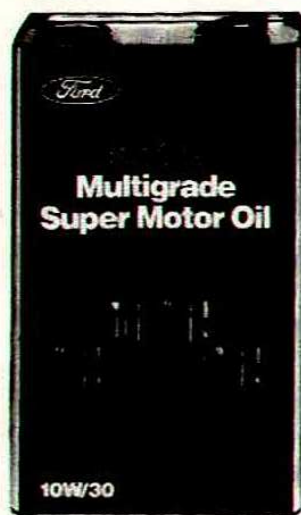
Check Ford First.

A 4.546 LITRE CAN 10/30, 20/50, OR 15/40 SF/CD
MULTIGRADE FORD OIL PLUS FILTER
TO FIT FORD KL, OHC, BL AND V
ENGINES, ALSO SOME ALFA-ROMEO,
FIAT, LADA, LANCIA, PEUGEOT,
RELIANT, RENAULT, SAAB, TALBOT,
TOYOTA AND VOLVO ENGINES

TECHNOLOGY TELLS...
NEW SUPER COPPER
CORE SPARK PLUGS
FROM MOTORCRAFT

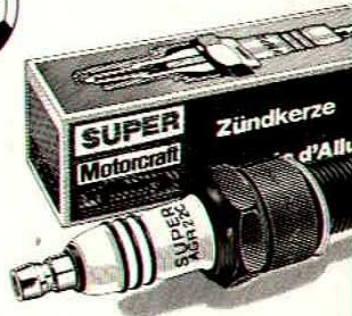
£4.00

(SET OF 4 - INCLUDING VAT)



£6.50

INC. VAT



OPEN ALL DAY SATURDAY

ALL PRICES INCLUDE VAT



Walker Jackson & Co. Limited
CAR PARTS
Marlborough Road
Tel: Swindon 695702



Walker Jackson & Co. Limited
VAN AND TRUCK PARTS
Coped Hall, Wootton Bassett
Tel: Swindon 850225

PARTS CENTRE
OPEN SIX DAYS A WEEK
Monday to Friday
8am - 6pm
Saturday 8.30am - 5pm
PARTS CENTRE
OPEN SIX DAYS A WEEK
Monday to Friday
8.30am - 6.30pm
Saturday 8.30am - 3.30pm

When Charlie Williams spo

PAUL PLOWMAN with the first of two articles chronicling the l

By the time Swindon Town celebrates the 100th anniversary of the move to the County Ground in September 1995, the last terracing in the stadium will probably have disappeared.

Those Victorian officials who planned the move could scarcely have imagined what would happen one hundred years on.

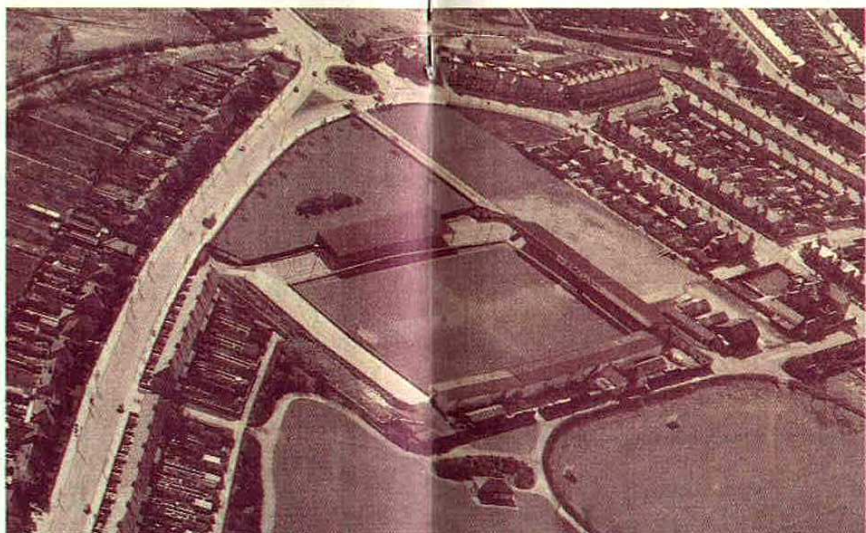
The inadequacies of the club's previous abode – The Croft off Devizes Road – were all too clear. The lack of such "luxuries" as turnstiles and dressing rooms urged the club to seek a home more in keeping with their newly-found "professional" status.

The "Wilts County Ground" offered a vast area for future development and was located in the fast-growing borough of New Swindon. The club had

sampled the facilities of this site as early as 1893, when they began playing friendly matches on what is now the cricket pitch. Swindon Wanderers FC also used the ground.

After agreeing a first year rent of £40, the grand opening took place on September 7 1895, when Swindon Town met Nat Whittaker's XI in a challenge match and won 5-1. The first Southern League opponents, Ilford, followed on October 5. The admission price was 6d. Giant goalkeeper Charlie Williams managed to spoil the big day by getting himself sent off before half-time, but the Town still recorded a 2-0 victory.

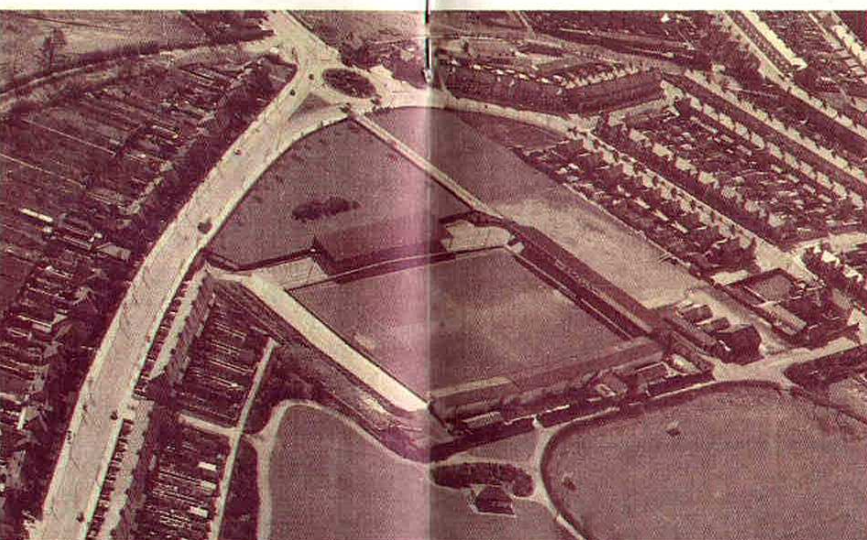
The Wilts County Ground Company attempted to increase the rent to £65 for 1896/97, but the club threatened to move to a site



A picture from approximately 1910, showing part of the old North Stand. The player in the middle, in the dark shirt, is the legendary Harold Fleming.

lie Williams spoiled the day

first of two articles chronicling the history of the County Ground



behind the Duke of Edinburgh and so the two parties eventually settled for a five-year lease at the old rate.

It was in 1896 that the switch was made to the site of the present pitch, the club loaning sufficient cash to fund the building of the first stand on its north side. The stand was 150 feet long and cost £308!

Proper terracing was first laid out in 1908, but no major enhancements took place until the summer of 1911, following the club's most successful season so far when they lifted the Southern League championship.

The stand was raised and moved back ten feet, creating space for further terracing. The structure was extended to the whole length of the north side with Directors and Press boxes being built over gangways at each end of the original building. The ground could now boast 516 seats in its capacity of twenty thousand.

The capacity was never fully tested with 18,107 for the visit of Manchester United in the F.A. Cup in 1914 being the largest attendance recorded before the First War.

Election to the Football League in 1920 saw a further increase in the ground capacity. The twenty-thousand "barrier" was duly broken in

the following January when 21,261 saw Chelsea defeat the Town in the F.A. Cup.

Admission prices also went up to a shilling – or two shillings for a seat! But there could be few complaints over value for money from the first Football League match to be staged at the ground, as Luton Town were beaten by nine goals to one.

There was no covered accommodation on three sides of the County Ground until 1932. During the close season that year, occupants of the south side were provided with some protection from the elements when a "shelter" was positioned either side of the half-way line.

The embankment at the Hotel or Town end was terraced in January 1935 for the grand sum of five pounds!

A year later, plans were laid to spend £8,000 on a new stand. Somewhat surprisingly, the Board voted in favour of erecting it on the north side, to replace the now 40-year old grandstand.

After much deliberation, the new stand appeared in 1938, but at the Town end of the ground. It cost little more than half the allotted cost – and even that was met by the Supporters' Club.

● Look out for the second part of the County Ground's history in the programme for the Wolves match.

← Two aerial views of the County Ground. Compare the top photograph, taken just after the War, with the up-to-date photo taken by Dave Evans last week. The half-length Shrivenham Road stand was replaced by the current stand in 1958. The old North Stand made way for the new one in 1971.

AKERS GARAGE LTD.

MAIN VAUXHALL CAR AND LIGHT COMMERCIAL DEALER

VAUXHALL - VAUXHALL - VAUXHALL - VAUXHALL

CAR/VAN SALES NEW & USED
Service Department M.O.T. Testing Station
BODY & PAINT REPAIR SHOP
Genuine Vauxhall Spares
SELECTION QUALITY USED VEHICLES

VAUXHALL - VAUXHALL - VAUXHALL - VAUXHALL

AKERS

YOUR LOCAL VAUXHALL CAR AND LIGHT COMMERCIAL DEALER

THE STREET, MOREDON, SWINDON SN2 3ES

Tel: (0793) 523457/8/9



VAUXHALL

SERVICE - PARTS - SALES - SERVICE - PARTS - SALES - SERVICE - PARTS - SALES - SERVICE



SILVER KNIGHT

THREE LEVELS OF SERVICE
TO CATER FOR ALL NEEDS

- ★ VIP EXECUTIVE ★
- ★ LUXURY ★
- ★ GENERAL/CONTRACT ★

UK and CONTINENTAL CHARTER for BUSINESS and PLEASURE

All Silver Knight Coaches are of a high standard
You will receive the same efficiency whichever you choose

For our VIP/Executive service,
our drivers wear tailormade suits to fit the occasion

Your comfort will be guaranteed with

Reclining Seats - Curtains - Tables - Toilet/Washroom - Hot/Cold Drinks
Fridge - Servery/Bar - Video - Telephone - Hostess/Guide

Silver Knight Coaches Ltd., Christian Malford, Chippenham, Wilts. SN14 5BH
Telephone: (0249) 720360

FOR COACH TRAVEL SUPREMACY

Ticket information

Swindon Town v Wolves

Tuesday 18th September 1990

Kick-Off 7.45 p.m.

Match tickets for the above game are on sale from the ticket office during the following hours.

Today: before and after the game.

Monday: 9am to 5pm.

Tuesday: 9am until kick-off.

Prices: Adults £7 & £8 (North Stand)

Juniors/OAP £4 & £5 (North Stand)

(Payment may be made by cash, cheque with bankers card, Access or Visa).

Oxford United v Swindon Town

Saturday 22nd September 1990

Kick-Off 3.00 p.m.

Tickets are on sale from the ticket office during normal office hours (9am – 5pm Monday – Friday), after today's game and after the Wolves game on Tuesday. Price £8.50 – seats only.

This match is NOT all ticket and terrace and standing at the Cuckoo Lane end is available on the day of the game.

(Payment for tickets may be made by cash, cheque with bankers card, Access or Visa).

On the road to Darlington

Tuesday September 25

Route

Darlington is 230 miles from Swindon. Take A361 via Burford, Chipping Norton, Banbury and Daventry, joining M1 at junction 17. At junction 32, take M18 to A1(M). Follow A1(M) five miles beyond Scotch Corner, taking A66(M) and A66 into town. 4th exit at roundabout, into Victoria Road.

Parking

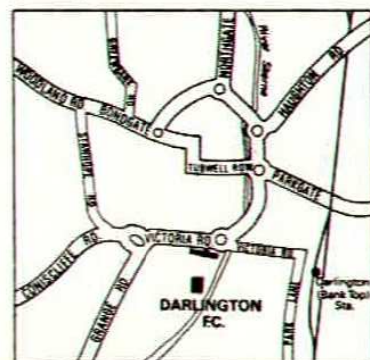
In street only.

Disabled

Disabled section in East Stand (but no disabled tickets).

Other Details

Darlington is the nearest railway station. Club phone number for ticket information (0325) 465097.



Today's Referee

The man in charge today is R. L. Bigger, a 41 year-old sales and marketing director from Croydon. Mr. Bigger, who joined the Referee's List in 1989, was a linesman for several years, and lists reading and most sports among his hobbies.

GWR FM 97.2

**THE
INFORMATION STATION**

Match Action



Above: **Steve Foley** forces a fine save out of Bristol City's keeper **Ronnie Sinclair**.

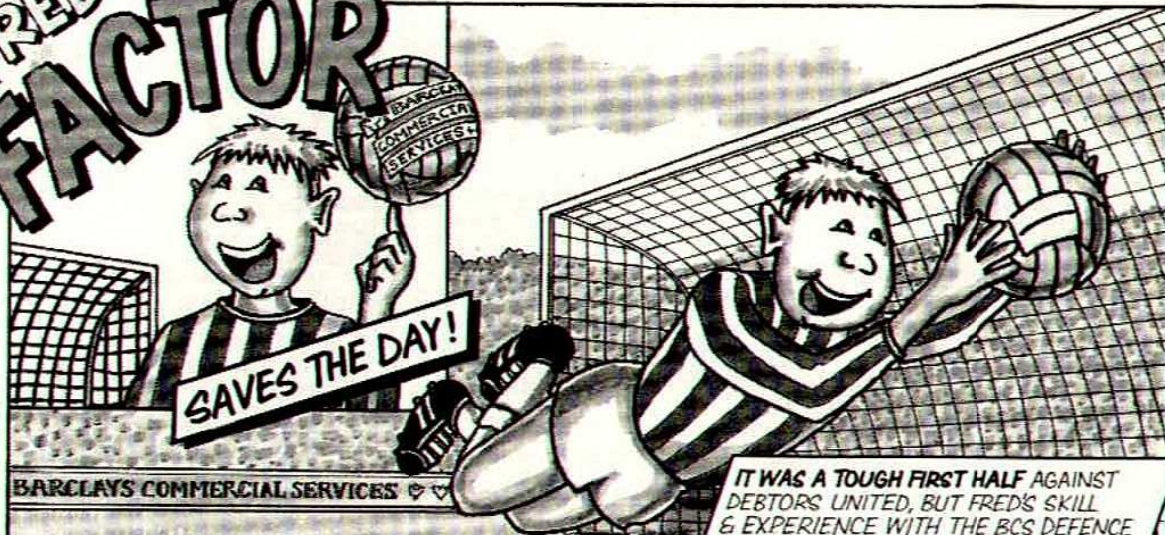


Right: **Jon Gittens** and **Ronnie Sinclair** in action.

GWR FM 97.2

FIRST FOR SPORT

FRED FACTOR



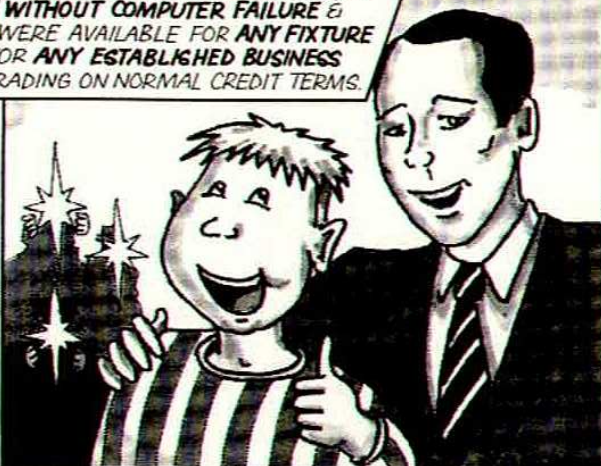
AFTER MAGNIFICENT
PLAY IN **COLLECTIONS,**
CREDIT CONTROL &
CLIENT MANAGEMENT.

IT WAS A TOUGH FIRST HALF AGAINST
DEBTORS UNITED, BUT FRED'S SKILL
& EXPERIENCE WITH THE BCS DEFENCE
GUARANTEED A **SALES LEDGER IN FIRST**
CLASS ORDER & 100% PROTECTION FROM
BAD DEBTS. THE CAPACITY CROWD AT
AQUILA ROAD WERE ON THEIR FEET!



...BCS WENT
ON TO MAKE AN
80% IMMEDIATE
AVAILABILITY OF
CASH TO THE CLIENT.

AFTER THE VICTORY, BRIAN WOOD,
TEAM MANAGER, STRESSED THAT
THIS WAS A TYPICAL TEAM GAME.
FRED FACTOR & BCS PLAYED 365
DAYS A YEAR, WITHOUT HOLIDAYS
WITHOUT COMPUTER FAILURE &
WERE AVAILABLE FOR ANY FIXTURE
FOR ANY ESTABLISHED BUSINESS
TRADING ON NORMAL CREDIT TERMS.



BARCLAYS

COMMERCIAL

SERVICES + + +

FOR FULL DETAILS ON FACTORING:

FRED FACTOR, BARCLAYS COMMERCIAL
SERVICES LTD, AQUILA HOUSE, BREEDS PLACE
HASTINGS, EAST SUSSEX TN34 3DG
TEL: (0424) 430824 FAX: (0424) 427322 TELEX: 95450

BARCLAYS COMMERCIAL SERVICES ARE MEMBERS OF THE ASSOCIATION OF BRITISH FACTORS & DISCOUNTERS AND FACTORS CHAIN INTERNATIONAL

OVER 100 CARS TO
CHOOSE FROM - LATEST
MODELS AVAILABLE,
SALOONS, HATCHBACKS,
ESTATES, AUTOMATIC,
SPORTS, PRESTIGE CARS

- RADIOS
- CHILDSEATS
- ROOF RACKS
- & TOW BARS

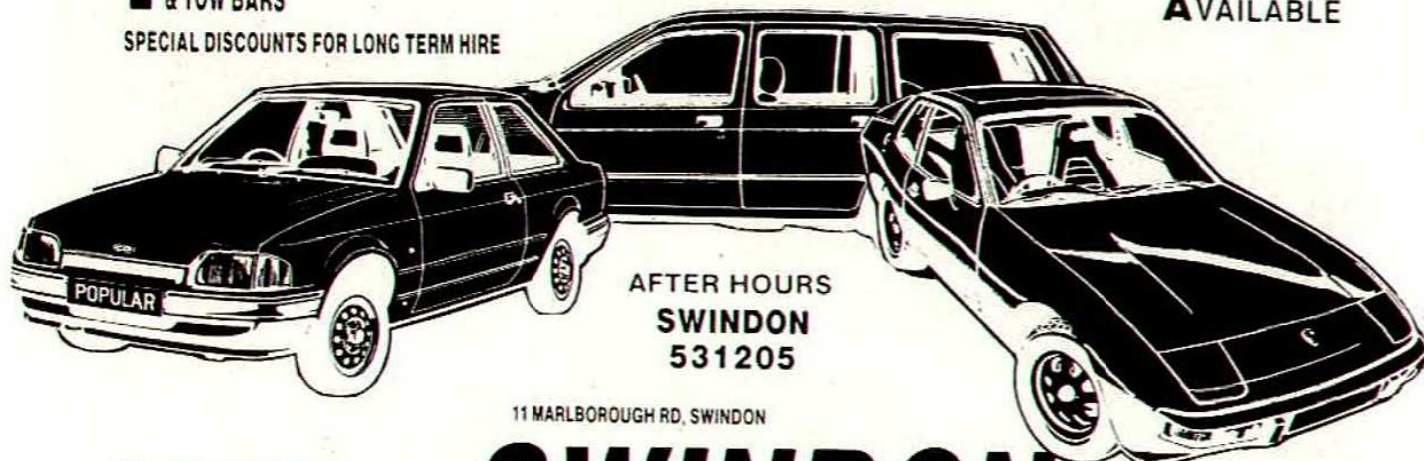
SPECIAL DISCOUNTS FOR LONG TERM HIRE

DELUXE CAR HIRE

FULL AA RELAY
COVER

NO MILEAGE
CHARGE

DELIVERY &
COLLECTION
AVAILABLE



AFTER HOURS
SWINDON
531205

11 MARLBOROUGH RD, SWINDON

NO HIDDEN EXTRAS
WE QUOTE ALL IN
PRICES

OPEN 7 DAYS A WEEK

SWINDON 644996



BAMPTONS



STRATTON ROAD,
SWINDON,
WILTSHIRE.

TEL: (0793) 35547/8/9

MOTOR VEHICLE ACCIDENT REPAIR SPECIALISTS

Approved by Major Insurance Companies



Motor
Agents Association

Joe Jordan today warned jubilant Bristol City fans not to be carried away by their team's impressive start to the season.

There were chants of "going up" as City outplayed a Swindon Town team good enough to win the Second Division promotion play-offs last season.

The 1-0 victory at the County Ground yesterday offered further proof that

Jordan is building a formidable squad at Ashton Gate.

But with the season

Woodspring Evening Post, 3.9.90

SWINDON TOWN 0, BRISTOL CITY 1

Richard Latham

Joe Jordan removed the sparkle from Swindon's diamond with two gems of his own at a packed County Ground.

Andy May and Gary Shelton were key figures in a marvellous City display that confirmed all the early-season optimism at Ashton Gate.

Pre-match talk centred on the effectiveness of Swindon's diamond mid-field formation, which proved so successful in the Second Division last season.

But, after watching the Wiltshire club in action against Ipswich Town last week, Jordan came up with the perfect counter punch — and the players to deliver it.

Shelton, pushed forward to combat Ross

SWINDON 1, IPSWICH 0

Foley 77 mins.

Half-time: 0-0.

Attendance: 10,817.

Bookings: Lowe, Zondervan and Kiwomya of Ipswich, Foley and Gittens of Swindon.

Conditions: The County Ground pitch had enjoyed a rock concertless summer. It looked green and good.

Man of the match: Duncan Shearer.

Match highlight: The second-half thunderbolt from Ipswich's Neil Thompson that crashed onto the crossbar.

Match verdict: Improved display by Ipswich, but the loyal travelling fans are still praying for a new striker.

STAR RATINGS

(Sponsored by Gallagher Car and Van Rentals)

Swindon: (4-4-2) Digby 7; — Kerslake 5, Gittens 7, Calderwood 6, Bodin 7, — Jones 6, (Sub McLoughlin 65 mins), Foley 7, MacLaren 7, Simpson 7, — Close 7, Shearer 8.

Ipswich: (4-5-1) Forrest 8; — Yallop 6, Gayle 7, Linighan 7, Thompson 7 (sub Palmer 81 mins) — Stockwell 6, Humes 6, Zondervan 6, Redford (sub Gregory 20 mins), J., Kiwomya 6, — Lowe 5.

Referee: Mr. K. Cooper (Mid-Glamorgan) 5.

CITY FACTS

Entertainment rating (maximum 5 stars)

★ ★ ★ ★

City form

Excellent

Man of the Match

ANDY MAY (City)... high class mid-field display

Referee

VIC CALLOW (Solihull)... good

Goals

SWINDON none
CITY Bent (32 mins)

Corners

SWINDON 7
CITY 5

Shots on target

SWINDON 6 (Kerslake, Close 2, Shearer, Foley, Bodin)
CITY 6 (Shelton 3, Newman 2, Bent)

Off-target

SWINDON 7
CITY 5

Fouls

SWINDON 9
CITY 9

Offsides

SWINDON 4
CITY 7

Bookings

SWINDON Kerslake (foul, 35 mins)
CITY none

Teams

SWINDON (4-1-2-1-2): Digby; Kerslake, Gittens, Calderwood, Bodin; MacLaren, Jones (sub 71 mins Hockaday), Simpson; Foley, Close (sub 45 mins McLoughlin), Shearer.
CITY (4-1-2-1-2): Sinclair; Llewellyn, Rennie, Newman, Aizlewood; May, Bent, Smith, Shelton; Taylor, Morgan (sub 89 mins Allison), Sub (not used) Bailey.

Attendance: 12,249

Weather: warm

Pitch: hard

Rumbled

The League Cup, Milk Cup and Littlewoods Cup are things of the past. The competition is now called The Rumbelows Cup. In the draw for the two-leg Second Round we were paired with Darlington, who beat Blackpool on away goals in the First Round.

The first leg will be played at Darlington on Tuesday, September 26 and the return leg at the County Ground two weeks later – Tuesday, October 9.

Town on tour

Have you visited the souvenir shop recently? It's had a face-lift and also has some new stock in, including the latest "Swindon Town On Tour" T-shirts (costing £6.50). You could also treat yourself to a scarf with pockets for £6 or a bobble hat for £3.20. The sports shop, next door, meanwhile, is planning a sale. (Watch this space).

Bully for us



Steve Bull, the only Second Division player in the England squad, will be at the County Ground on Tuesday, when the Town take on Wolves. Bull scored 27 goals last season. By the end of the season he had notched up an incredible 109 goals in 161 matches for Wolves, and now has 11 England caps (8 as sub).

Next time

In the programme for the Wolves game, look out for the second part of our history of the County Ground, Julian Wilson and 30 Things You Probably Didn't Know About Duncan Shearer.

The hotline

Following the success of their "Hooligan Hotline" prior to the World Cup, which invited members of the public to give information on "potential troublemakers" to the police, the line is to be made available on a regular basis.

350 calls resulted from the World Cup line and the vast majority, the police say, were of use to them. The line is "an effort to combat the hooligans who are bringing our game into disrepute" and information is received in strict confidence.

The number is 071-230 5340.

**YOU SUPPLY THE TALENT
MITRE SUPPLY THE REST !**



 **mitre**
F O O T B A L L



MITRE ARE THE SOLE MANUFACTURER & SUPPLIER TO THE ENGLISH FOOTBALL LEAGUE
OF THE EXCLUSIVE DELTA DESIGN OFFICIAL MATCH BALL.

Kit Sponsors

FRASER DIGBY

Mr and Mrs Fisher, Birdcombe Walk, Swindon
Mrs Chilcott, 34 Ash Walk, Warminster
The Brown Family, Carterton
Alexander Independent Financial Advisors
S.T.F.C. Skittles Team, Top Cue, Stonehouse

NICKY HAMMOND

Modular Marquees
(06667) 246
and
Mr Jonothan Powell

DAVE HOCKADAY

Mr and Mrs Tucker of Seend
Mr Piper and Friends, Swiss Chalet
Mr and Mrs Fisher, Birdcombe Walk
Bryant School of Motoring: 823421
Colin Aldridge, The Dormers, Highworth



TOM JONES

"I bet he drinks
Carling Black Label"



JON GITTENS

Wessex
Conservatories

ROSS MACLAREN

John Tremlin, Coped Hall Service Station
Terry Wollen, Wollens Off Licence
Jenco Industrial Services
Lynne Stevens, Epping Close, Warminster
Rebecca Vockins, Priory Green, Highworth

ALAN McLOUGHLIN

John Harris, Westcott Place Post Office, Swindon
Martyn Smith, Minchinhampton, Gloucester
Keith Chilcott, 34 Ash Walk, Warminster
Sandra Coburn

KEVIN MORRIS

Geoff James of Banbury
Mr Maurice Earle
Jenco Industrial Services

ADRIAN VIVEASH

Raynor and Sons
Vehicle Dismantlers
Broad Town, Swindon
Tel: Swindon 863715

STEVE FOLEY

Mrs Chilcott, 34 Ash Walk, Warminster
G. Mulcahy, Wills Club, Swindon
R. and J. Warren of Lambourne
Jenco Industrial Services
Jason and Duncan Malcome of Bulford Village

TONY GALVIN

The Robins Out Of Town

OSSIE ARDILES

Swindon Supporters in London
Contact:
Nick Coote 081-828 1437
Paul Donkersley 081-870 0316
David Moulard 081-347 9845

COLIN CALDERWOOD

Jenco Industrial Services
Mr and Mrs Peet, White Hart, Oare
Mr Tim Barnes, Ashton Keynes
R. and K. Owen, Friesian Close, Swindon
Roland, Nigel and Sam Jones with Peggy Postma

SHAUN CLOSE

Compton Welding, Purton 770742
V.G. Newman, Lea, Malmesbury
John Ward, New Farmley, Leeds
Tudor Carpets, Seymour Road, Swindon
Jefferies D.I.Y., High Street, Highworth

PAUL BODIN

Mr K. P. Emms
Mary Hewer Take Away
Groundwell Road
Swindon

NICKY SUMMERBEE

Sir Seton Wills

DAVID KERSLAKE

Hain and Smith
Opticians
Marlborough, Swindon, Highworth

DUNCAN SHEARER

Bassett Bookmakers

FITZROY SIMPSON

Clare Catering of Oxford

STEVE WHITE

Multisets
For all Computer Stationery
Tel: (0793) 729500

PAUL HUNT

TS TYPESETTING
Typesetters of the official
S.T.F.C. matchday programme
Tel: (0793) 618505

ANDY ROWLAND

R. K. Owen, Friesian Close, Swindon
Chris Weavers, Haydon Court, Swindon
Jenco Industrial Services
Andrea Pegler and Hilary Mahoney
The Old Vicarage, Kempsford

JOHN TROLLOPE

Nationwide Anglia
Building Society



CHIC BATES

Julian Wilson

GWR FM 97.2

**FOR SPORT, NEWS, INFORMATION AND
ENTERTAINMENT 24 HOURS A DAY, CALL
THE GWR RADIO LINE ON 0898 333000**

Calls charged at 38p/min peak/25p/min all other times

THE UNBEATABLE TEAM

DEACONS



PLUS



ROLEX

SALES
& SERVICE



DEACONS

(Established 1848)



11-13 WOOD STREET, SWINDON

Tel: 522072 and 527530

23 MARKET PLACE, TETBURY Tel: 52766



Hulford

Motors Ltd

SELF DRIVE HIRE SPECIALISTS
FOR OVER 30 YEARS

CAR & VAN HIRE

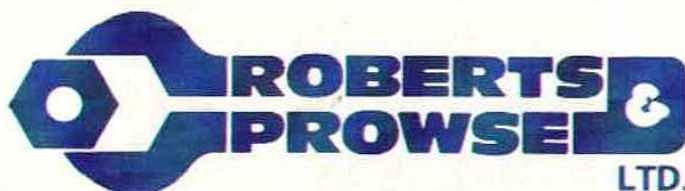


SPECIAL LOW LONG WEEKEND RATES



SHRIVENHAM ROAD, SWINDON

534934 & 524839



SPECIALISTS IN
LTD.

*Process Pipework and Plant, Building Mechanical Services,
Industrial Fabrication, Sheet Metalwork, Combustion Services, Thermal Insulation,
Asbestos Removal, Engineering Merchants, Development Engineers*

THORNHILL, SOUTH MARSTON, SWINDON SN3 4TA.
TELEPHONE (0793) 825505 FACSIMILE (0793) 822642



CASTLE'S

Office and Bakery

4 and 5 MARKET STREET SWINDON

Telephone 522017

Specialists

Wedding Cakes, Birthday Cakes.

Try our Wholemeal Bread and

Wiltshire Lardies and

Delicious Dairy Cream Cakes

ELEGANT

Reproduction Furniture

Luxury . . . you can afford



Qualities to suit all tastes . . .

Prices to suit all pockets . . .

Come and see for yourself at . . .

Howell's

Reproduction Furniture & French Polishing Specialists
52, DEVIZES ROAD, OLD TOWN



Swindon. Tel: 535658



TRANSPLANT

CONSTRUCTION MACHINERY RENTAL



Reading Depot:
Transplant Limited,
Toutley Works, Toutley Road,
Wokingham, Berkshire RG11 5QN
Tel: Reading (0734) 786278
Fax: (0734) 792820

South Coast Depot:
Unit 10, Fort Fareham Ind. Est.,
Newgate Lane, Fareham,
Hampshire PO14 1AH
Tel: Fareham (0329) 822453
Fax: (0329) 822502

**NEW
SOUTH COAST
DEPOT**



Bristol Depot:
Transplant Limited,
Emery Road, Brislington Trd. Est.,
Bristol BS4 5PF Tel: (0272) 779211
Fax: (0272) 711559

Swindon Depot:
Gipsy Lane,
Swindon
Tel: (0793) 542266
Fax: (0793) 731600

BULK EXCAVATIONS
Six and Eight Wheel
Hinos. Hire on Daywork
or Priced Basis.

POWERED AERIAL ACCESS EQUIPMENT

These items may be hired from any of our depots, but for specialist advice contact our Manager

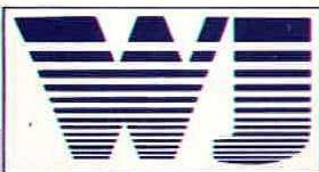
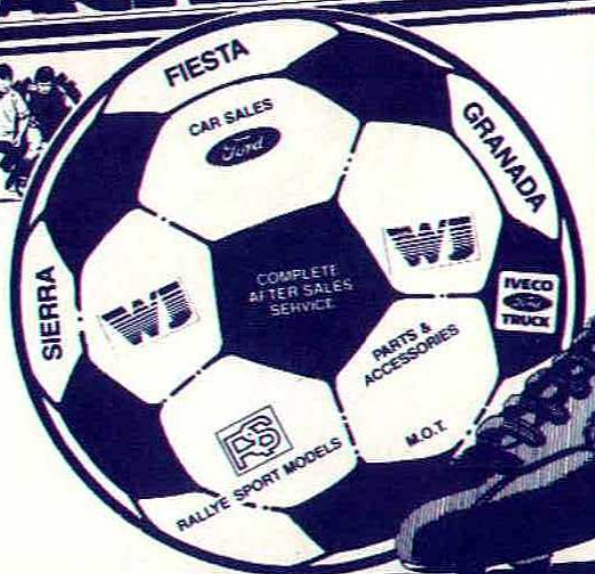
THE FORCE IN PLANT HIRE



Head Office and Accounts Telephone: Swindon (0793) 731741

WALKER JACKSON

**Motoring...
we're on the
ball!**



We're with you all the way!

Car Sales
Fleming Way
Roundabout
Tel: Swindon 20002

Car Service & Parts
Marlborough Road
Tel: Swindon 20002

Commercial Sales Service Parts
Coped Hall, Wootton Bassett
Tel: Swindon 853344



A Member of the Normand Group of Companies

Ten sound reasons for choosing a Wessex Conservatory.

Acknowledged experts: unbeatable quality. 1



6 Clear-Shield easy-clean glass protection.

Sturdy, durable: precision-engineered frame. 2

7 Planned and installed by trained personnel.

Superb choice of single or double glazed. 3

8 Super choice of blinds and other options.

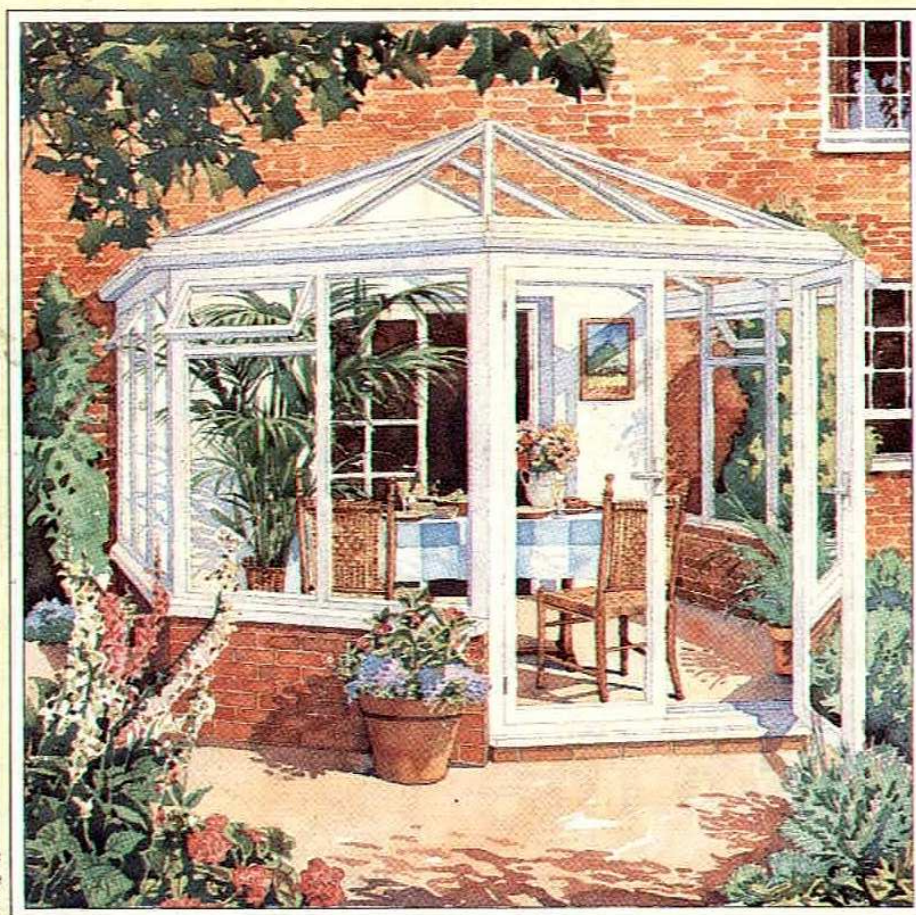
With toughened glass for extra safety. 4



9 Security locks and fittings standard.

Designed just the way you want it. 5

10 Comprehensive 10 year Guarantee.



Available in
Classic White
or Havana Brown.

WESSEX CONSERVATORIES

Founder member of the Conservatory Association.

For free 20 page colour brochure send this coupon to:

Wessex Aluminium Ltd., Hawksworth, Swindon,

Wilts. SN2 1DZ

Or PHONE (0793) 644633

Please send me your FREE 20 page colour brochure
and details of my nearest Wessex dealer.

Name.....

Address.....

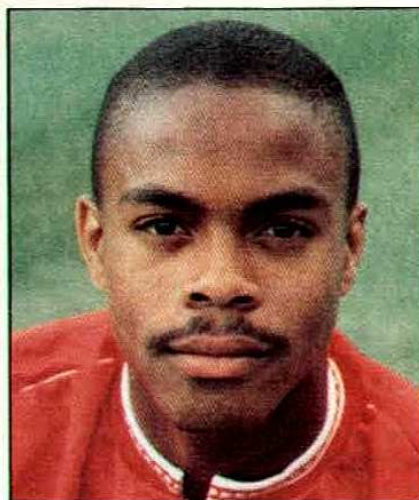
Phone No..... Ref. STFC



Fitzroy Simpson

- "Fitz" was born in Bradford-on-Avon on 26 February 1970.
- He attended St Michael's and George Ward Schools in Melksham and Chippenham Technical College.
- He lives in Grange Park, West Swindon.
- When he was a boy he supported Chelsea and Manchester United.
- His favourite players of the past are Pele, Platini and Tigana.
- Glenn Hoddle, Alan Hansen and Bryan Robson are his favourite current players.
- The biggest influence on his career is his mum.
- He hates spiders and mosquitos.
- If he was not a footballer, he says he would have been a bricklayer.
- He passed his driving test first time but doesn't like driving.
- When he has retired from the game he is going to "put on three stone without worrying about it".
- He has 3 'O' Levels.
- He can speak Jamaican and a little French.

- Lenny Henry is his favourite comedian, and he also likes Norman Wisdom and Eddie Murphy.
- His favourite colour is black.
- He plays darts for the Crown at Stratton whenever he's needed.
- "Never Too Much" by Luther Vandross is his favourite song. He also likes listening to Jonathan Butler and Soul to Soul.
- He is a regular reader of "Viz" magazine.
- Mike Tyson is the person he would most like to meet.
- He prefers kicking towards the Town End goal.
- His favourite food is steak, or his mother's Jamaican Chicken.
- If he was not a player, he would watch matches from Stratton Bank.
- He considers his most difficult opponent to be the referee.
- Apart from football, pool is the game which he is best at.
- He has two nicknames: "Big Time" and "Champagne Charlie".

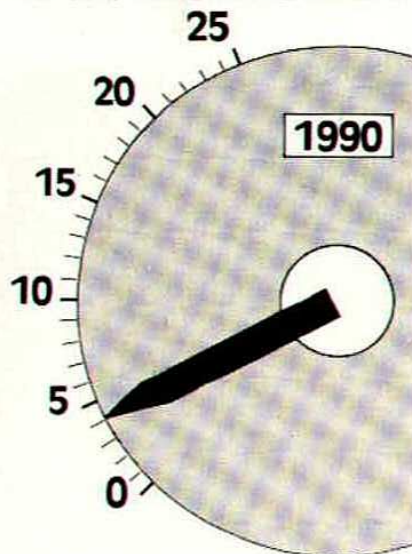


A handwritten signature of Fitzroy Simpson in black ink. The signature is stylized, with the first letters of the first and last names being large and prominent.

- His winner at Hull City last season is the goal which he considers to be the best he has scored.
- Within the game, his ambition is to play for England and "be a legend".
- The most embarrassing moment of his career was being sent off.
- If he could change any rule in football, he would do away with referees – "so I won't get sent off!"
- Fitz says: "The players think that our supporters are the best in the country".

Compiled by
BRIAN CARTER

GOALOMETER



Swindon Town F.C. would like to thank the firms and individuals opposite for sponsoring every first team goal scored in competitive matches during season 1990/91.

SPONSORED GOALS

Lovatt Heating, Cirencester
 Abbey Road Garage, Cirencester
 M.S. Group, Swindon
 Clare Catering of Oxford
 Keith Lodge Industrial Roofing
 Metalite Engineering
 The Riverway Wine Company,
 Trowbridge
 Swindon Calor Gas Centre, Swindon
 Roy Allen Supplies, Swindon
 Brunel Scaffolding, Swindon
 Regal Windows, Swindon
 Skurrays, Drove Road, Swindon
 Thamesdown Cleaning Services,
 Swindon
 Multi Agg Quarries, Shellingford
 Les Smith Haulage, Swindon
 Moores Cars, Faringdon
 Carling Black Label
 Blunsdon House Hotel, Swindon
 Starlight Private Hire Cars, Swindon
 Western Daily Press
 Ashtons Auto's, Swindon
 Hammond Construction, Highworth
 Sun Ray Heating, Swindon
 High Close Soft Fruit, Hungerford
 Fisher Roofing, Link House,
 Highworth
 Biplob Tandoori Restaurants
 Swindon, Rodbourne, Highworth
 S. Coburn

BARCLAYS LEAGUE DIVISION TWO 1990/91

	P	W	D	L	F	A	Pts
Oldham Athletic	4	4	0	0	9	3	12
Sheffield Wed.	3	3	0	0	8	1	9
Millwall	3	3	0	0	8	3	9
West Ham United	4	2	2	0	4	2	8
Bristol City	3	2	1	0	6	3	7
Swindon Town	4	2	1	1	4	3	7
Notts Co.	3	2	0	1	5	3	6
Newcastle Utd.	3	2	0	1	4	2	6
Port Vale	4	2	0	2	9	9	6
Ipswich	4	2	0	2	4	5	6
Middlesbrough	3	1	2	0	2	1	5
Wolves	4	1	2	1	6	6	5
West Brom. A.	3	1	1	1	5	4	4
Bristol Rovers	3	1	1	1	5	5	4
Brighton & H.A.	3	1	1	1	3	3	4
Oxford Utd.	3	1	0	2	7	8	3
Plymouth A.	4	0	3	1	3	5	3
Blackburn Rovers	4	1	0	3	5	8	3
Barnsley	3	1	0	2	3	6	3
Leicester	4	1	0	3	4	8	3
Portsmouth	4	0	2	2	5	9	2
Watford	4	0	1	3	2	5	1
Hull City	4	0	1	3	4	10	1
Charlton A.	3	0	0	3	2	5	0



HELPING THE GAME



The Football Trust 1990 has been created to help the game at all levels and to assist clubs meet the requirements of Lord Justice Taylor's Final Report.

Safety and comfort for all spectators is the primary objective and substantial funds have been made available for the provision of seating at Football League grounds. At the same time the Trust's commitment to family and community initiatives will continue with the provision of more family enclosures, better toilet facilities, covered accommodation, artificial pitches for local use and the development of women's and junior football particularly through community programmes, plus a wide range of policing and crowd control measures.

Each year The Trust expects to receive £20 million from the reduction in Pool Betting Duty plus the £10 million continuing contribution from the Spotting-the-Ball competition organised by Littlewoods, Vernons and Zettors. This money will be invested in projects which benefit football throughout the United Kingdom.

**BARCLAYS LEAGUE FIXTURES
DIVISION TWO 1990/91**

Sat	Aug. 25	Charlton Athletic
Tues.	Aug. 28	Ipswich
Sun.	Sept. 2	Bristol City
Sat.	Sept. 8	Hull City
Sat.	Sept. 15	Middlesbrough
Tues.	Sept. 18	Wolverhampton W'derers
Sat.	Sept. 22	Oxford United
Tues.	Sept. 25	Darlington (LC R2)
Sun.	Sept. 30	Millwall
Tues.	Oct. 2	Oldham Athletic
Sat.	Oct. 6	Brighton & Hove Albion
Tues.	Oct. 9	Darlington (LC R2)
Sat.	Oct. 13	Bristol Rovers
Sat.	Oct. 20	West Ham United
Wed.	Oct. 24	Leicester City
Sat.	Oct. 27	Barnsley
Wed.	Oct. 31	League Cup R3
Sat.	Nov. 3	Port Vale
Sat.	Nov. 10	Portsmouth
Sat.	Nov. 17	Sheffield W'sday (FAC1)
Sat.	Nov. 24	Notts County
Wed.	Nov. 28	League Cup R4
Sat.	Dec. 1	Blackburn Rovers
Sat.	Dec. 8	Ipswich Town (FAC2)
Sat.	Dec. 15	Charlton Athletic
Sat.	Dec. 22	West Bromwich Albion
Wed.	Dec. 26	Newcastle United
Sat.	Dec. 29	Watford
Tues.	Jan. 1	Plymouth Argyle
Sat.	Jan. 5	F.A. Cup R3
Sat.	Jan. 12	Bristol City
Wed.	Jan. 16	League Cup R5
Sat.	Jan. 19	Hull City
Sat.	Jan. 26	F.A. Cup R4
Sat.	Feb. 2	Middlesbrough
Sat.	Feb. 9	Oxford United
Tues.	Feb. 12	Wolverhampton W'derers
Wed.	Feb. 13	League Cup Semi-Final L1
Sat.	Feb. 16	Sheffield W'sday (FAC5)
Sat.	Feb. 23	Portsmouth
Wed.	Feb. 27	League Cup Semi-Final L2
Sat.	Mar. 2	Blackburn Rovers
Sat.	Mar. 9	Notts. County
Tues.	Mar. 12	Oldham Athletic
Sat.	Mar. 16	Millwall
Wed.	Mar. 20	Bristol Rovers
Sat.	Mar. 23	Brighton & Hove Albion
Sat.	Mar. 30	Newcastle United
Mon.	Apr. 1	West Bromwich Albion
Sat.	Apr. 6	Watford
Sat.	Apr. 13	Plymouth Argyle (FAC SF)
Sat.	Apr. 20	West Ham United
Sun.	Apr. 21	League Cup Final
Sat.	Apr. 27	Leicester City
Sat.	May 4	Barnsley
Sat.	May 11	Port Vale
Sat.	May 18	F.A. Cup Final

Digby Kerslake Bodin Simpson Calderwood Gittens Jones Shearer Close MacLaren Foley Hockaday McLoughlin Summerbee

Match Sponsors

Redman Sheet Metal
The Plumb Center
Crosby Doors Ltd
M.S. Group Swindon

Metalite Engineering

Roy Allen Supplies
Arkells, Kingsdown

Clarion Shoji (UK)
Multi Agg Quarries

Mr. Clive Sharples

McLean Homes
Swindon Calor Gas

John Coyle Services

Burmah Petroleum

Swindon Co-Op

Heywood Insurance

Action Plant Hire

Skurveys, Swindon
Hamond Constr'n

F. Green & Sons

McLean Homes Ltd
Clarion Shoji Ltd

TICKET INFORMATION

Will supporters please note that, in future, tickets for all matches will, until further notice, be on sale from the ticket office adjacent to the Robins Corner souvenir shop at the entrance to the ground.

SOUTHERN JUNIOR FLOODLIT CUP

S.T.F.C. v Colchester
Monday 24th September 1990
Kick-Off 7.30p.m.
at the County Ground

Key: Home matches in bold • Goalscorer † and * Substitutions



WARNING TV SURVEILLANCE

This ground is equipped with
**CLOSED CIRCUIT
TELEVISION**

Installed with the help of a grant from the Football Trust. It is there to increase crowd safety and to help the police. Recording facilities enable film and photographs to be taken of disorder, which may subsequently be used in a court of law.

The Football Trust is funded entirely by the pools companies Littlewoods, Vernons and Zetters from their Spotting-the-Ball competition.

SPALL SPORTSWEAR LIMITED

Official Suppliers to Swindon Town
F.C. and Many Other Leading League
Clubs

DO CALL AND SEE DOUG WOODMAN AND
VIEW THE LARGE RANGE OF FOOTBALL
AND OTHER SPORTS GOODS AVAILABLE
FROM THE OFFICIAL CLUB SHOP.
OPEN 9.00 to 12.00 2.00 to 5.00 DAILY

SWINDON TOWN

MIDDLESBROUGH



FRASER DIGBY

Makes his 166th League appearance for the Town today.



DAVID KERSLAKE

Missed last Saturday's trip to Hull through injury.



PAUL BODIN

Celebrated his 26th birthday on Thursday.



ALAN McLOUGHLIN

Scored his first goal of the season in his first full appearance last weekend.



COLIN CALDERWOOD

Once played in goal against Middlesbrough Reserves and saved a penalty.



JON GITTENS

Made his 100th full League appearance for the Town at Hull.



TOM JONES

Plays his 89th League game for the Town today.



DUNCAN SHEARER

Scored in the Town's victory at Ayresome Park last season.



SHAUN CLOSE

Was unable to repeat Duncan's feat with a birthday goal last Saturday.



ROSS MacLAREN

Made his 100th consecutive appearance for the Town against Bristol City.



STEVE FOLEY

Gave way to Fitzroy Simpson with 25 minutes remaining last Saturday.



12. FITZROY SIMPSON

14. NICKY SUMMERBEE



Referee: R. L. Bigger (Croydon)



STEPHEN PEARS

At Old Trafford while both Fraser Digby and Alan McLoughlin were apprentices.



COLIN COOPER

Has been with 'Boro since 1983, but made only 18 League appearances last season.



JIMMY PHILLIPS

One of two former Oxford United players in the 'Boro line-up.



TONY MOWBRAY

The Middlesbrough skipper and longest serving player.



ALAN KERNAGHAN

Was second highest marksman for 'Boro last year with six goals.



JOHN WARK

Scored his first goal for the club with the winner against Notts Co last week.



BERNIE SLAVEN

Like Alan McLoughlin, a member of the Republic of Ireland squad in Italy.



ROBBIE MUSTOE

Scored his first goal for the club in the League Cup tie at Tranmere.



STUART RIPLEY

Tall blond midfielder who usually plays on the flanks. Just one goal in 1989/90.



MARTIN RUSSELL

Made his debut for 'Boro in the League Cup tie with Tranmere.



JOHN HENDRIE

Scored for Leeds in their defeat at the County Ground last season.



12. IAN BAIRD

14. OWEN McGEE



Linesman Red Trim: J. B. Cox
Linesman Yellow Trim: R. W. Hodgetts

NEXT HOME MATCH: Swindon Town v Middlesbrough
Tuesday September 18th 1990. Kick-Off 7.45 p.m.

TODAY'S MATCH SPONSOR:

Crosby Doors Ltd.

TODAY'S BALL SPONSOR: PETER GODWIN

TODAY'S MASCOT

RALPH PLUMMER lives at Seend, near Melksham, and goes to George Ward School. He plays for the school team and Shaw Boys, and his favourite players is Ross MacLaren.



IMPORTANT SAFETY NOTICE
IMPORTANT SAFETY ANNOUNCEMENTS BY THE CLUB MANAGEMENT OVER
THE PUBLIC ADDRESS SYSTEM WILL BE PRECEDED BY A LOUD SIGNAL TO
CATCH THE ATTENTION OF SPECTATORS.